

RORO DECK LIGHTING

Maritime Applications



LED | LIGHTING CATALOG



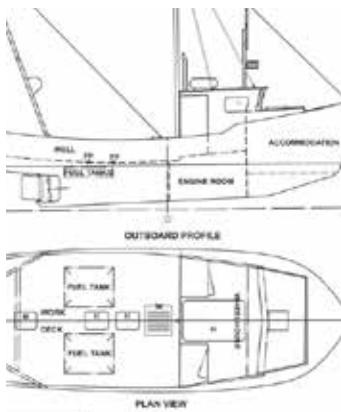
ENGINEERED LIGHTING SOLUTIONS

Vision X lighting fixtures are not merely lighting systems, they are engineered lighting solutions. They provide increased efficiency, increased safety, decreased environmental impact, and decreased costs. Vision X LED lights offer a large increase in energy efficiency over older technologies while also increasing the safety and productivity of the working environment by outputting 80% more light than the fixtures used previously.



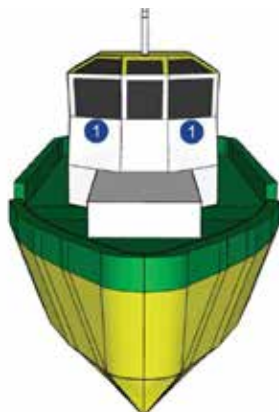


SOLUTION PROCESS



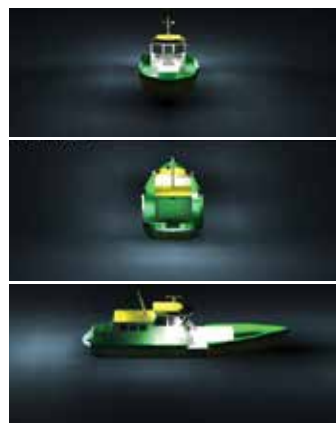
2D BLUEPRINT

Vision X Lighting begins each project with a customer provided list of vessels to be retrofitted, then gathers the technical information for those vessels.



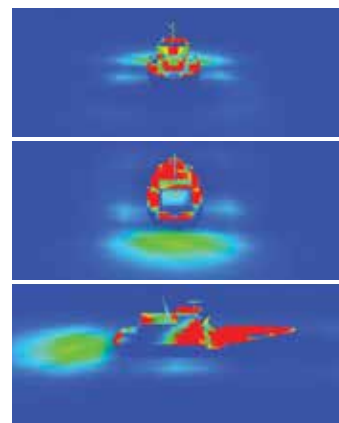
3D MODEL

A 3D model is built to the customer's specifications, then carried over into the rendering.



SIMULATION RENDER

A simulation rendering ensures the final product will meet the customer's lighting requirements.

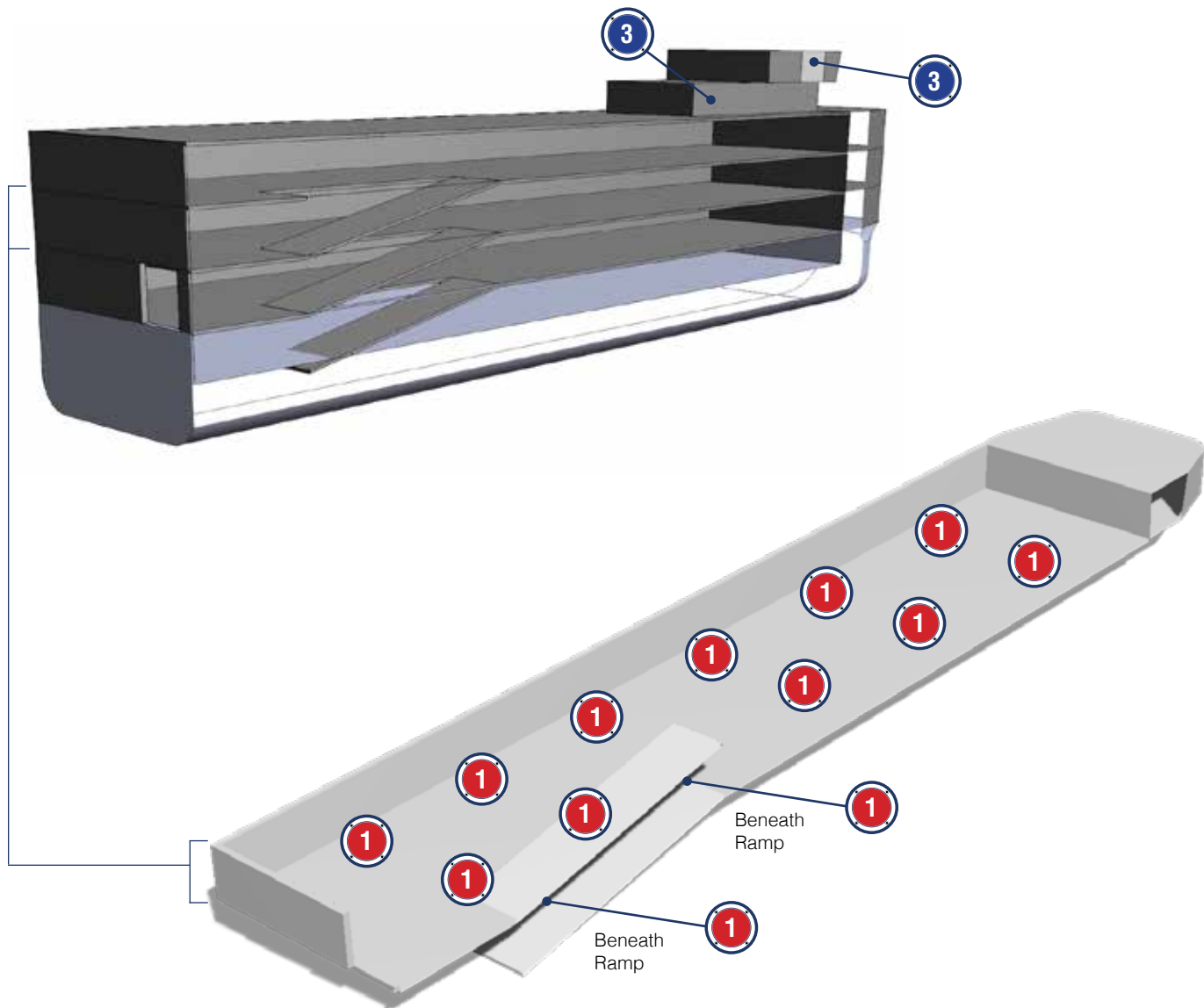


SOLUTION

Vision X Lighting creates a complete breakdown of the customer's specific needs to meet their lighting and safety requirements.



RORO DECK LIGHTING FITOUT GUIDE



1 LINEAR LIGHTS



*Battery backup available on 2ft and 4ft only.

MOUNTED STAINLESS STEEL BRACKETS LINEAR-SERIES WORK LIGHT

Number of Fixtures : Application Specific

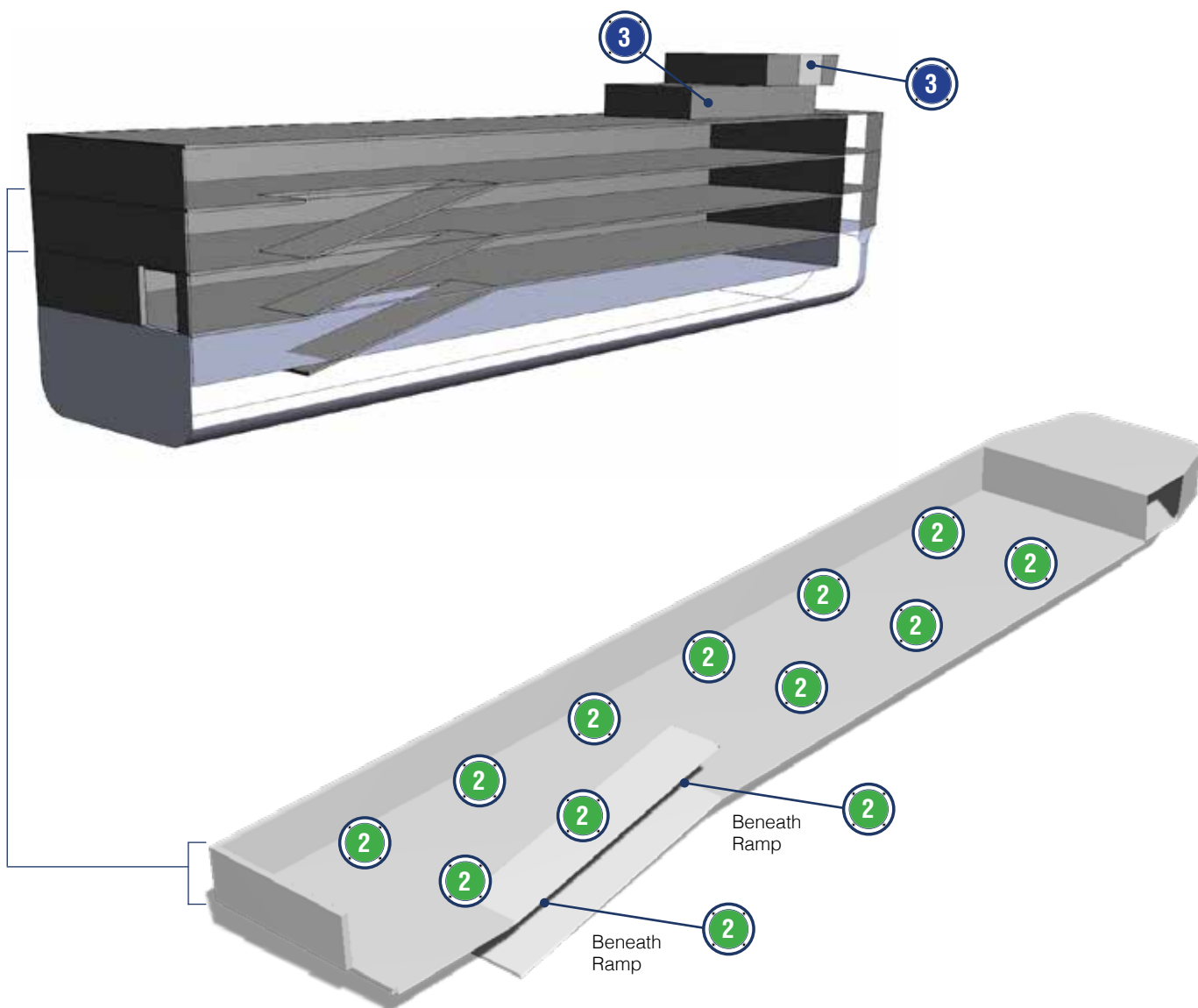
Location : **Ceiling**

Beam Pattern : **180°**

Part # : **LLG0212180FSRQC**

LLG0221180FSRQC

LLG0242180FSRQC



**LOW BAY LIGHTING
AC-SERIES WORK AREA LIGHT**

Number of Fixtures : **Application Specific**
Locations : **Exterior and Interior**
Beam Pattern : **180°**
Part # : **LSG0225180STR**



**ENTRY WAY LIGHTING
AC-SERIES WORK AREA LIGHT**

Number of Fixtures : **Application Specific**
Locations : **Walkway, Stairwells, Door Way**
Beam Pattern : **180°**
Part # : **LSGSM40180F**



LINEAR LUMINAIRE

Product Information

Project Name:
Date:
Type:

Application

Designed to outshine and outlast the competition, the Linear Luminaire fixture features advanced electronic technology like Pulse Width Modulation, Electronic Thermal Management, and a Redundant Circuit Design that allow the fixture to function even if half of the light should fail for unknown reasons. This is part of the effort by Vision X to ensure that the Linear Luminaire fixture is the most dependable LED fixture in the workplace.

SPECIFICATIONS 1-FOOT LINEAR

Mechanical Information:

Fixture Weight:	4.2 lbs (2kg)
Shipping Weight:	6.13 lbs (2.7kg)
Mounting/ Entries: (See Accessories)	----

Electric Specifications:

Operating Voltage:	90 - 305VAC 127 - 300VDC
Lumens:	4,000 lm
Wattage:	30W
Operating Temp:	-40°C ~ 40°C
THD:	< 20% (@load≥75% /100-277VAC)
Power Factor:	≥ 0.98/120VAC ≥ 0.96/220VAC
Short Circuit:	Constant Current Limiting, Recovers Automatically After Fault Condition is Removed
Frequency:	47-63Hz
Vibration:	8.7Grms

Construction:

Housing:	Die-Cast 6061 Aluminum
Finish:	Gloss Grey
Lens:	Polycarbonate Lens

LED Light Engine / Driver

LED:	MHB-B(CREE)
Amp Draw:	0.5A @ 120VAC 0.27A @ 220VAC
Lifespan:	50,000 hr



Stainless Steel Brackets
Item#: LLG0212180FSRQC



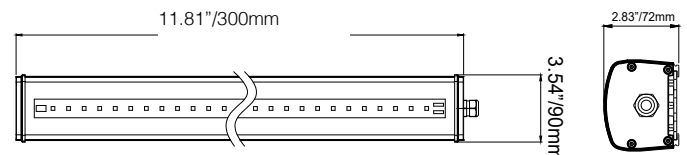
PART #:

1 LLG0212180FSRQC

BEAM PATTERN

180° Ultra-Wide Flood

2D DRAWING:



RATINGS:

EMC Emission:	Compliance to EN55022, EN61000-3-2 Class A , EN61000-3-3
EMC Immunity:	Compliance to EN55024, EN61000-4-2, 3, 4, 5, 6, 8, 11; light industry level (surge 2KV), criteria A
Ingress Protection:	IP-66, IP-67





LINEAR LUMINAIRE

Product Information

Project Name:

Date:

Type:

Application

Designed to outshine and outlast the competition, the Linear Luminaire fixture features advanced electronic technology like Pulse Width Modulation, Electronic Thermal Management, and a Redundant Circuit Design that allow the fixture to function even if half of the light should fail for unknown reasons. This is part of the effort by Vision X to ensure that the Linear Luminaire fixture is the most dependable LED fixture in the workplace.

SPECIFICATIONS 2-FOOT LINEAR

Mechanical Information:

Fixture Weight: 6.8 lbs (3.08kg)

Shipping Weight: 8.13 lbs (3.7kg)

Mounting/ Entries:
(See Accessories) -----

Electric Specifications:

Operating Voltage: 90 - 305VAC
127 - 300VDC

Lumens: 7,000 lm

Wattage: 60W

Operating Temp: -40°C ~ 40°C

THD: < 20% (@load≥75% /100-277VAC)

Power Factor: ≥ 0.98/120VAC
≥ 0.96/220VAC

Short Circuit: Constant Current Limiting, Recovers
Automatically After Fault Condition is
Removed

Frequency: 47-63Hz

Vibration: 8.7Grms

Construction:

Housing: Die-Cast 6061 Aluminum

Finish: Gloss Grey

Lens: Polycarbonate Lens

LED Light Engine / Driver

LED: MHB-B(CREE)

Amp Draw: 0.5A @ 120VAC
0.27A @ 220VAC

Lifespan: 50,000 hr



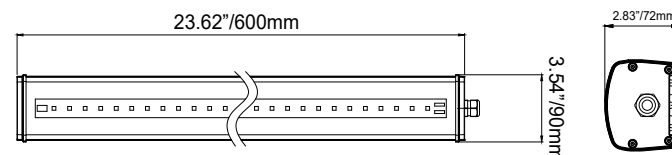
PART #:

1 LLG0221180FSRQC

BEAM PATTERN

180° Ultra-Wide Flood

2D DRAWING:



RATINGS:

EMC Emission:

Compliance to
EN55022, EN61000-3-2
Class A, EN61000-3-3

EMC Immunity:

Compliance to EN55024,
EN61000-4-2, 3, 4, 5, 6, 8, 11; light
industry level (surge 2KV), criteria A

Ingress Protection:

IP-66, IP-67



LINEAR LUMINAIRE

Product Information

Project Name:

Date:

Type:

Application

Designed to outshine and outlast the competition, the Linear Luminaire fixture features advanced electronic technology like Pulse Width Modulation, Electronic Thermal Management, and a Redundant Circuit Design that allow the fixture to function even if half of the light should fail for unknown reasons. This is part of the effort by Vision X to ensure that the Linear Luminaire fixture is the most dependable LED fixture in the workplace.

SPECIFICATIONS 4-FOOT LINEAR

Mechanical Information:

Fixture Weight:	11.6 lbs (5.2kg)
Shipping Weight:	13.65 lbs (6.2kg)
Mounting/ Entries: (See Accessories)	----

Electric Specifications:

Operating Voltage:	90 - 305VAC 127 - 300VDC
Lumens:	13,400 lm
Wattage:	100W
Operating Temp:	-40°C ~ 40°C
THD:	< 20% (@load≥70% / 100-277VAC)
Power Factor:	≥ 0.99/120VAC ≥ 0.96/220VAC
Short Circuit:	Constant Current Limiting, Recovers Automatically After Fault Condition is Removed
Frequency:	47-63Hz
Vibration:	8.7Grms

Construction:

Housing:	Die-Cast 6061 Aluminum
Finish:	Gloss Grey
Lens:	Polycarbonate Lens

LED Light Engine / Driver

LED:	MHB-B(CREE)
Amp Draw:	1.0A @ 120VAC 0.55 @ 220VAC
Lifespan:	50,000 hr



Stainless Steel Brackets
Item#: LLG0242180FSRQC

Built-In Battery Backup
Item#: LBG0242180F



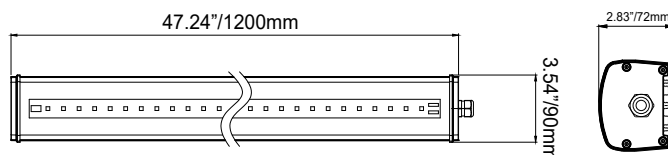
PART #:

1 LLG0242180FSRQC

BEAM PATTERN

180° Ultra-Wide Flood

2D DRAWING:



RATINGS:

EMC Emission:	Compliance to EN55022, EN61000-3-2 Class A, EN61000-3-3
EMC Immunity:	Compliance to EN55024, EN61000-4-2, 3, 4, 5, 6, 8, 11; light industry level (surge 2KV), criteria A
Ingress Protection:	IP-66, IP-67





Project Name:
Date:
Type:

This image shows a blank sheet of white paper with horizontal ruling lines. The lines are evenly spaced and run across the width of the page. There are no margins, text, or other markings on the paper.



LOW BAY LIGHTING

Product Information

Project Name:

Date:

Type:

Application

Designed to outshine and outlast the competition, the Machine House Lighting fixture features advanced electronic technology like Pulse Width Modulation, Electronic Thermal Management, and a Redundant Circuit Design that allow the fixture to function even if half of the light should fail for unknown reasons. This is part of the effort by Vision X to ensure that the Machine House Lighting fixture is the most dependable LED fixture in the workplace.

SPECIFICATIONS 50-WATT JUNCTION BOX

Mechanical Information:

Fixture Weight:	8 lbs (3.8kg)
Shipping Weight:	10 lbs (4.5kg)
Mounting/ Entries: (See Accessories)	(6) 3/4" NPT - SIDES

Electric Specifications:

Operating Voltage:	90 - 305VAC 127 - 431VDC
Lumens:	6000 - 7000 lm
Wattage:	50W
Operating Temp:	-40°C - 60°C
THD:	<20% (@load≥50% / 115VAC, 230VAC) (@load≥75% / 277VAC)
Power Factor:	≥ 0.98/115VAC ≥ 0.95/230VAC ≥ 0.92/277VAC
Short Circuit:	Constant Current Limiting, Recovers Automatically After Fault Condition is Removed
Frequency:	47-63Hz
Vibration:	15.6Grms

Construction:

Housing:	Die-Cast 6061 Aluminum
Finish:	Gloss Grey
Lens:	Polycarbonate Lens

LED Light Engine / Driver

LED:	MHB-B(CREE)
Amp Draw:	0.43A @ 115VAC 0.22A @ 230VAC 0.18A @ 277VAC
Lifespan:	50,000 hr

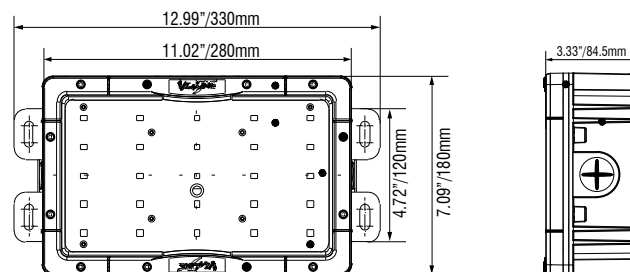


PART #:

BEAM PATTERN

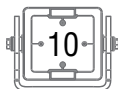
2 LSG0225180STR	180° Ultra Wide Flood
LBG0225180	180° Ultra Wide Flood

2D DRAWING:



RATINGS:

EMC Emission:	Compliance to EN55022, EN61000-3-2 Class A, EN61000-3-3
EMC Immunity:	Compliance to EN55024, EN61000-4-2, 3, 4, 5, 6, 8, 11; light industry level (surge 2KV), criteria A
UL 1598A Marine:	✓
Ingress Protection:	IP-68, IP69k





WALKWAY LIGHTING

Product Information

Project Name:

Date:

Type:

Application

Designed to outshine and outlast the competition, the Walkway Lighting fixture features advanced electronic technology like Pulse Width Modulation, Electronic Thermal Management, and a Redundant Circuit Design that allow the fixture to function even if half of the light should fail for unknown reasons. This is part of the effort by Vision X to ensure that the Walkway Lighting fixture is the most dependable LED fixture in the workplace.

SPECIFICATIONS 10-WATT JUNCTION BOX

Mechanical Information:

Fixture Weight:	2 lbs (0.9kg)
Shipping Weight:	4 lbs (1.8kg)
Mounting/ Entries: (See Accessories)	(4) 3/4" NPT - SIDES

Electric Specifications:

Operating Voltage:	90 - 264VAC 127 - 370VDC
Lumens:	1000 lm
Wattage:	10W
Operating Temp:	-40°C ~ 60°C
THD:	<20% (@load≥50% / 115VAC,230VAC) (@load≥75% / 277VAC)
Power Factor:	≥ 0.98/115VAC ≥ 0.95/230VAC ≥ 0.92/277VAC
Short Circuit:	Constant Current Limiting, Recovers Automatically After Fault Condition is Removed
Frequency:	47-63Hz
Vibration:	15.6Grms

Construction:

Housing:	Die-Cast 6061 Aluminum
Finish:	Gloss Grey
Lens:	Polycarbonate Lens

LED Light Engine / Driver

LED:	5630(LG)
Amp Draw:	0.09A @ 115VAC 0.04A @ 230VAC 0.04A @ 277VAC
Lifespan:	50,000 hr



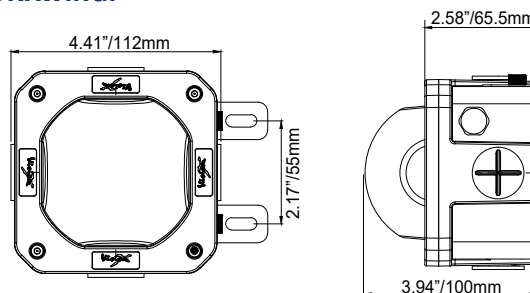
PART #:

3 LSGSM40180F

BEAM PATTERN

180° Ultra Wide Flood

2D DRAWING:



RATINGS:

EMC Emission:

Compliance to
EN55022,EN61000-3-2
Class A ,EN61000-3-3

EMC Immunity:

Compliance to EN55024,
EN61000-4-2,3,4,5,6,8,11; light
industry level(surge 2KV), criteria A

UL 1598A Marine:



Ingress Protection:

IP-68, IP69k



VISION X USA

1601 Boundary Blvd
Auburn WA 98001
United States of America
P: 253-218-2900
www.vxmaritime.com



VISION X ASIA

23-7 Dongtansandan
9-gil Dongtan-myeon Hwaseong-si
Gyeonggi-do 18487, Korea
P: 82-32-515-4814
www.visionxlighting.com